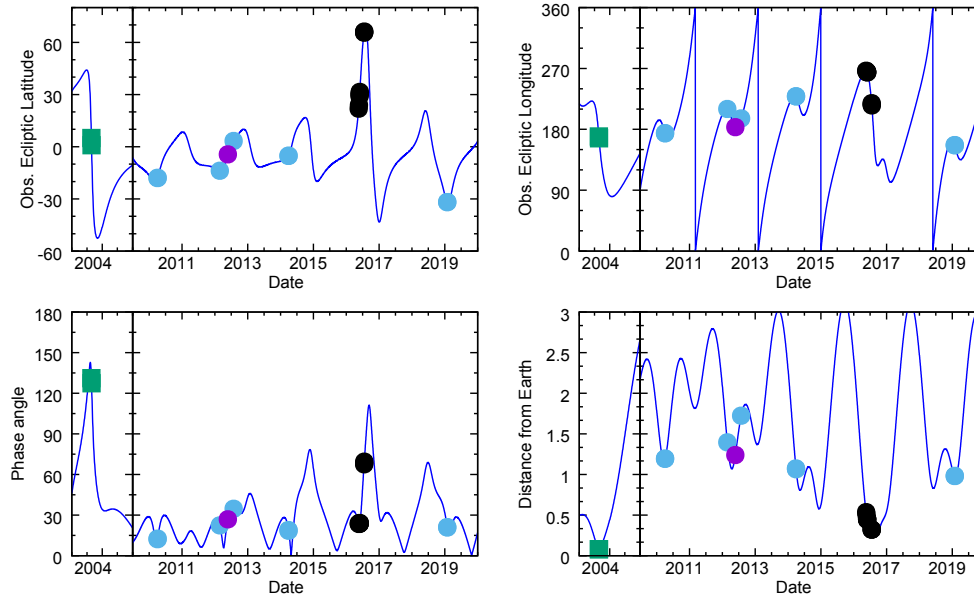


Physical Characterization of
Near-Earth Asteroid (68346)
2001 KZ66 from Optical and
Radar Observations

/ Tarik Zegmott

(68346) 2001 KZ66



Observations:

Radar – 2003

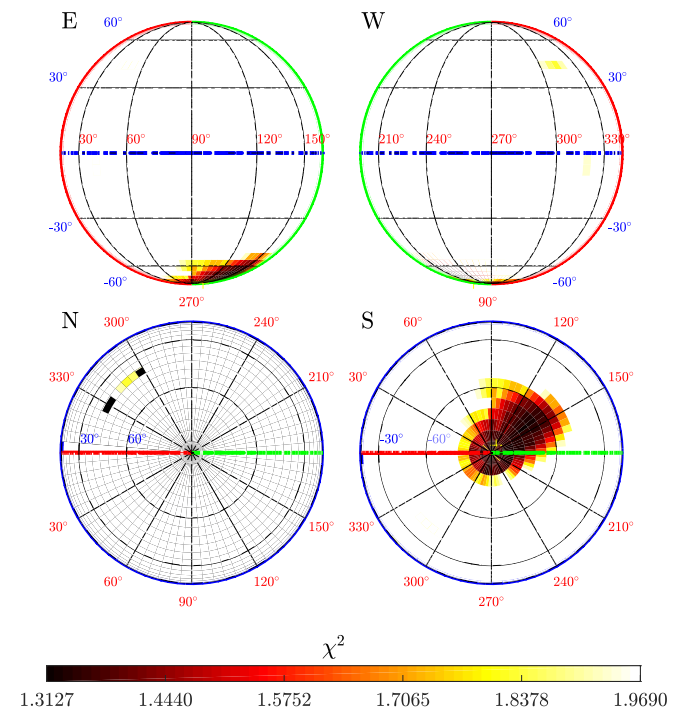
Lightcurves – 2010, 2012, 2014, 2016, 2019

Lightcurves used to constrain spin-state:

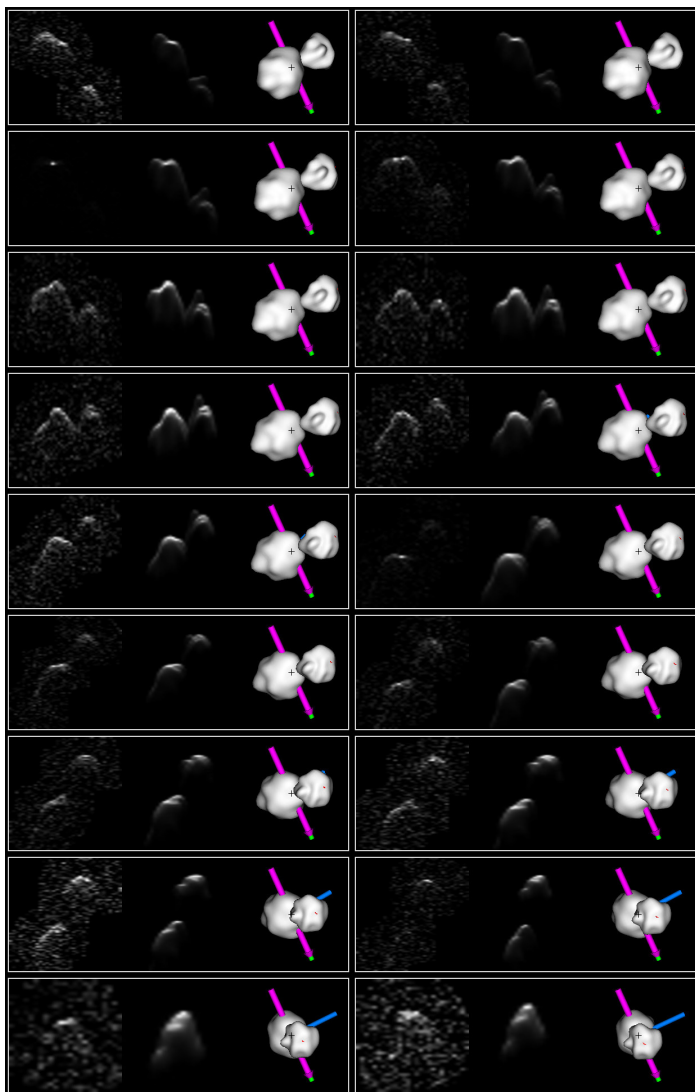
$$\lambda : 175^\circ$$

$$\beta : -75^\circ$$

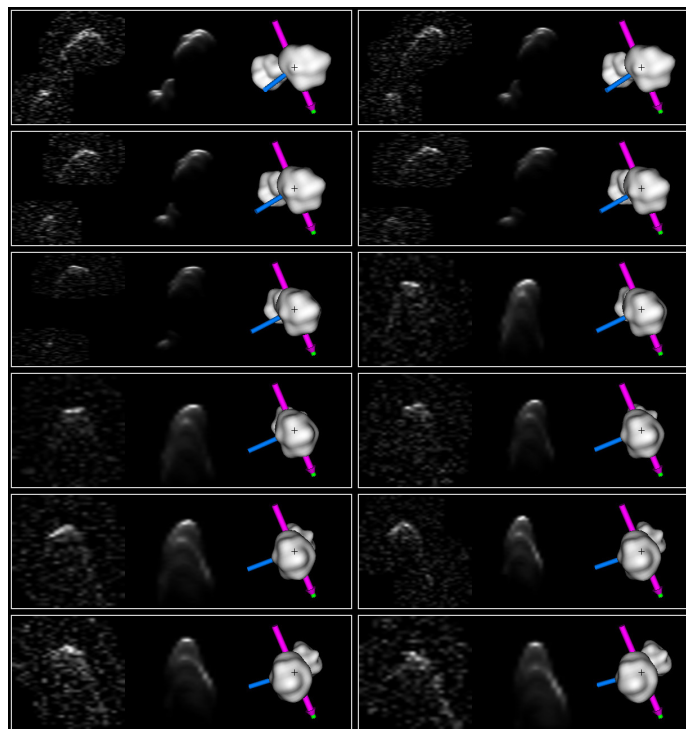
$$P : 4.985988 \pm 0.000119 \text{ h}$$



(68346) 2001 KZ66

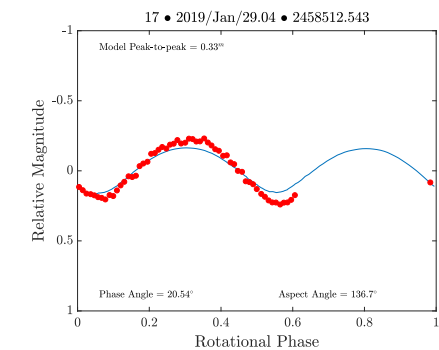
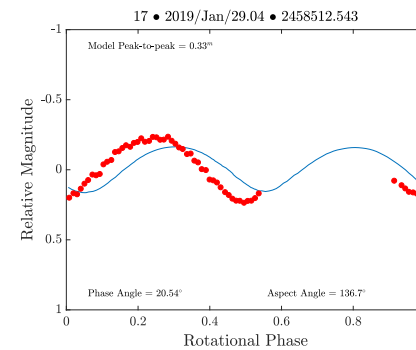
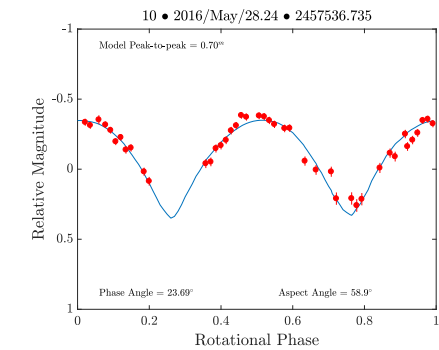
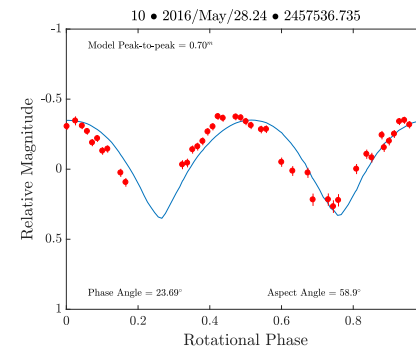
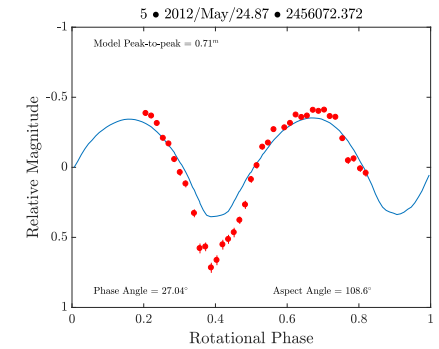
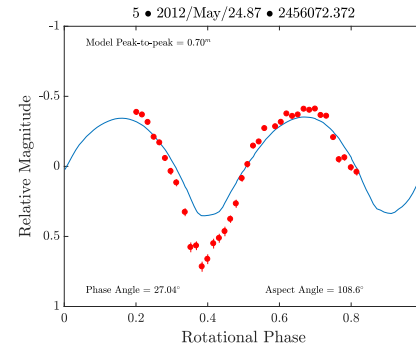
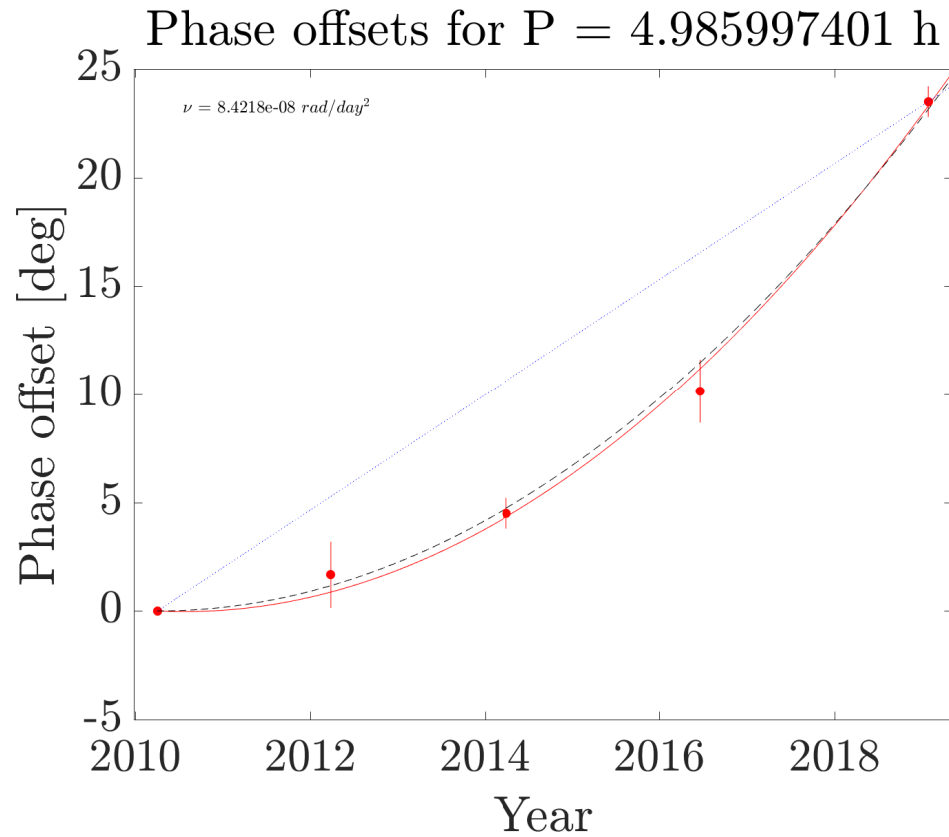


28 Oct 2003

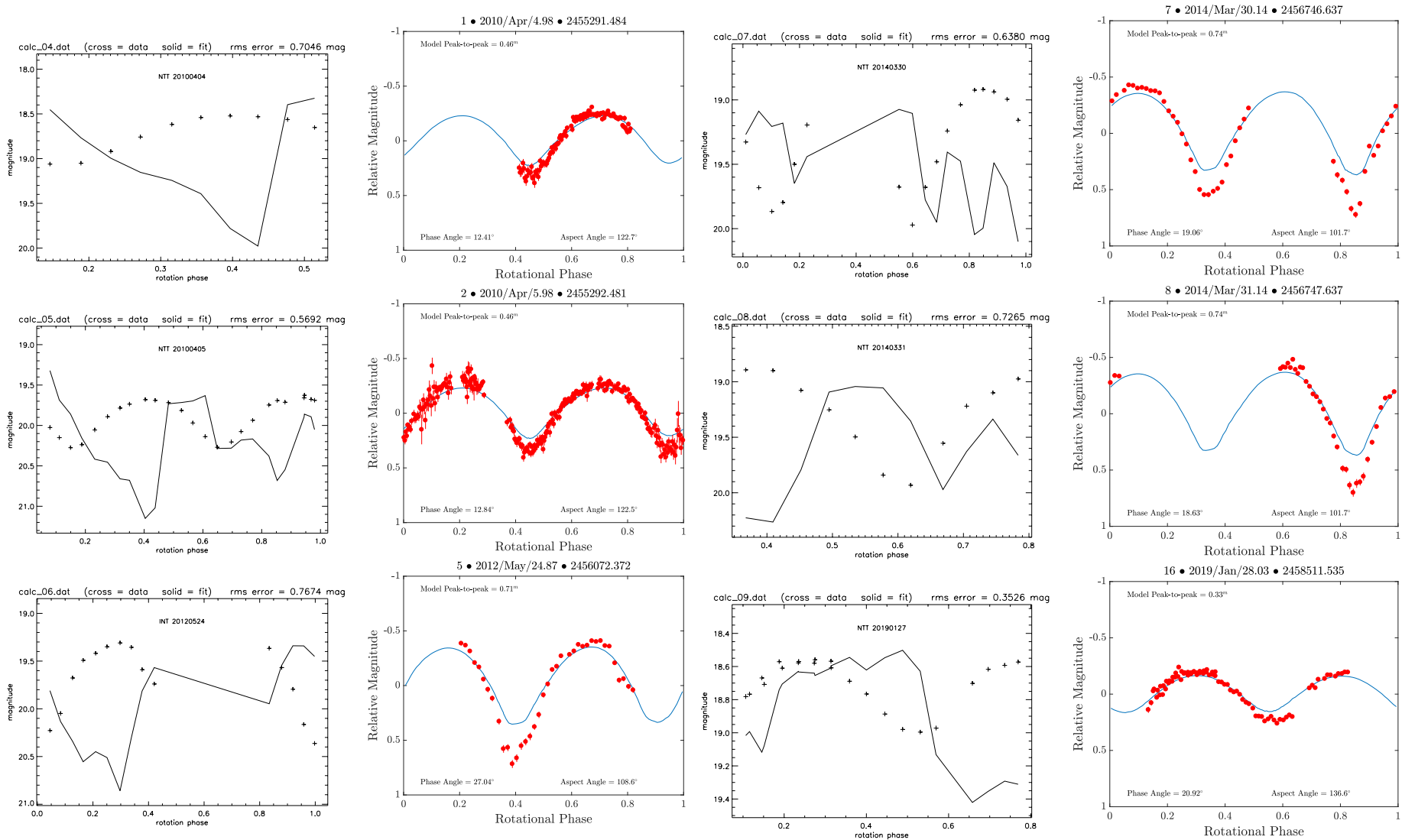


29 Oct 2003

(68346) 2001 KZ66



Discrepancy between plotting methods



THE UK'S EUROPEAN UNIVERSITY



www.kent.ac.uk

University of
Kent